

# turkis

T E C H N I C A L  
S P E C I F I C A T I O N S



GENERAL INFO	02
VENUE	05
SOUND	08
LIGHTS	09
BACKLINE / POWER	10

## What is turkis?

A musical meeting point where horizons boughen and traditions find new life. 12 years of history starting from det turkise telt, but also a new leap, new currents, and a new house.

# GENERAL INFO

## Contact

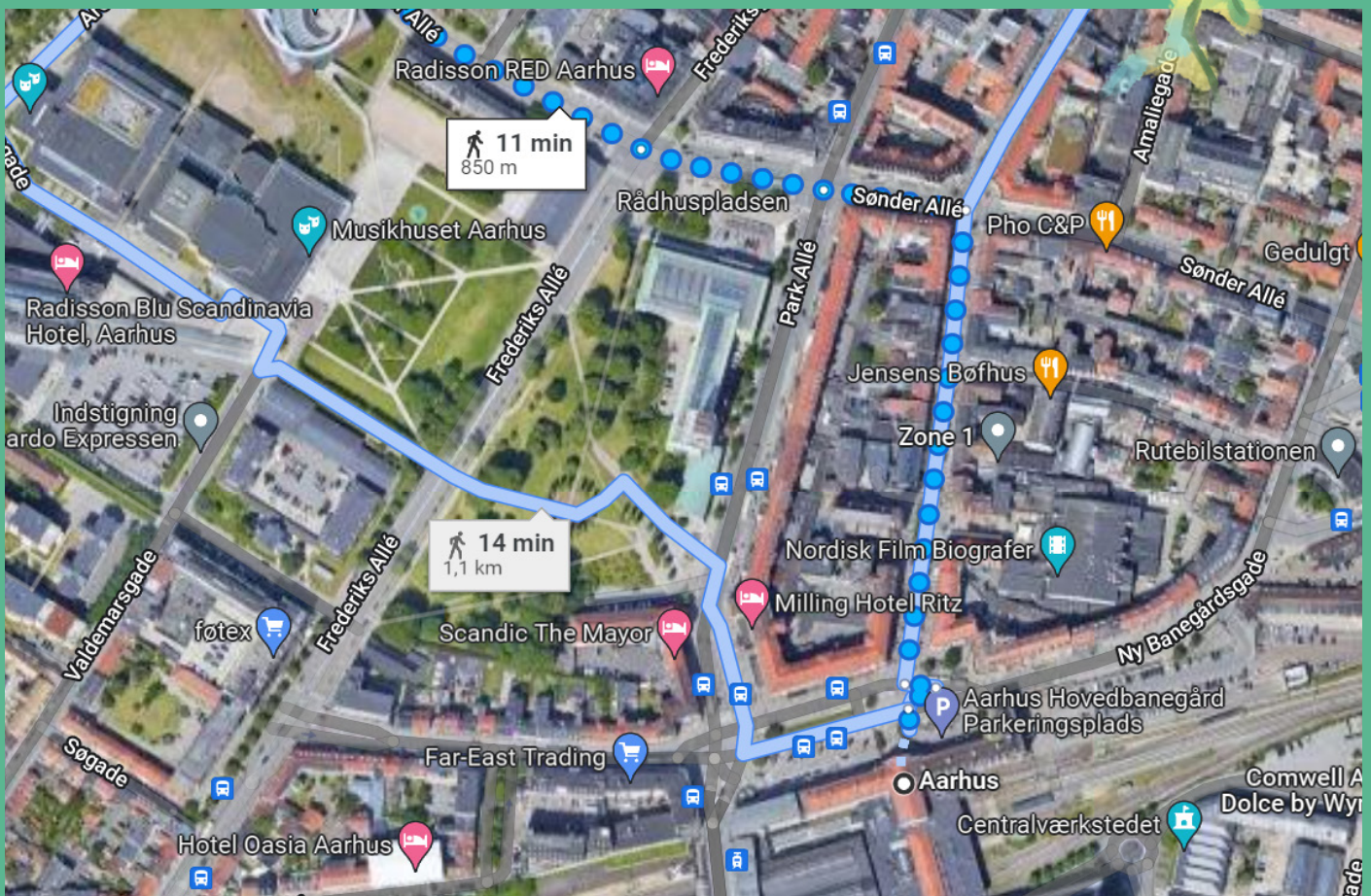
**Booker** / Baris      [booking@detturkisetelt.dk](mailto:booking@detturkisetelt.dk)  
**Tech** / Malte      [tech@detturkisetelt.dk](mailto:tech@detturkisetelt.dk)  
**PR** / Iben      [pr@detturkisetelt.dk](mailto:pr@detturkisetelt.dk)

Visit our website [www.turkislive.com](http://www.turkislive.com)

## Location

**Vester Allé 15**  
**8000 Aarhus C**  
**Denmark**

11 min walk from the train station.



# Parking

From Vester Allé turn into Museumsgade.



Backstage  
entrance

Load in



# Facilities

**Backstage** / We have two rooms available, both painted with natural colours, fitted with couches and chairs. A bathroom with shower and toilet is available in both rooms.

**Hybrid Home**



**Room of Roots**

**Food** / Is buyout from our local friends in the city that the turkis crew would approve of!

**Merch** / We have a table and a desk lamp to be positioned according to the need.

# VENUE

## The room

We want to create an organic room that feels like home, is inviting and inspiring. Our floors is covered in persian carpets. We have a raised sitting area with pillows and mattresses. We have a large bookcase where we have books, gifts, and small pictures to add to the feeling of home!

### *View from stage*



### *View from sound desk*



### *View from side of the room*



# The movable stuff

**The boxes** / We have boxes that can be placed around the floor for seating or for standing to create intimate atmospheres.



**The sails** / Three of the boxes is modified to hold the sails for making the room smaller or bigger.



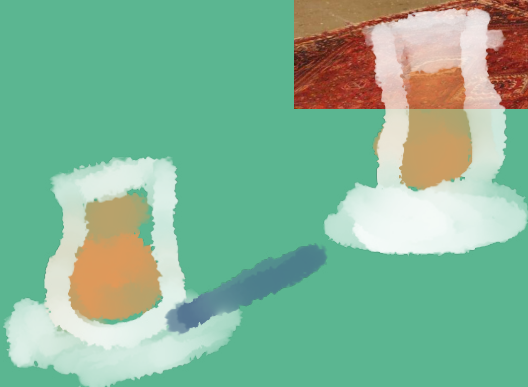
## The curtains /

In the ceiling above the audience area we have a curtain system that can be raised and lowered to accommodate the vibe and needs of each individual concert.



## The bar /

Our bar is covered in southern tiles and filled with handpicked beverages and Turkish tea!



# SOUND

## NOISE REGULATIONS:

103 dB(a) over 15 min” Measured at FOH.

### MAIN PA:

- 6 x Coda N-Aps - 3 pr. side (Linearray Configuration)
  - 2 x Coda U4 18' Subs - 1 pr. side
- 

### MONITORS (6 sends):

- 8 x Turbosound TFM-420 Monitor
  - 3 x Lab C28:4 Quad Amps
  - 3 x T.C Electronics XO-24 Digi Crossover
- 

### FRONT OF HOUSE:

- Digico SD-8 24 with overdrive software
  - Digico 48/8ch Madirack (Onstage)
- 

### MICROPHONES:

- 1 x Beta 91
  - 1 x D6
  - 1 x Beta 52
  - 4 x Audix F9
  - 4 x Sennheiser 604
  - 8 x SM 57
  - 4 x AKG 214
  - 2 x Sennheiser 421
  - 8 x Sure Beta58A
  - 14 x LD Systems DI
- 

### MIC STANDS:

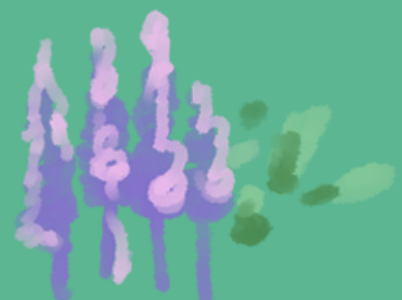
- 12 x Long boom stand
  - 9 x Short round boom stand
  - 2 x Short Xfoot boom stand
- 

### STAGE RISERS:

- 2 x 1x2m podiums
  - 8 x 20cm legs
  - 8 x 40cm legs
  - 8 x 60-100cm variable legs
  - 1 x black molton riser cover (for 40 cm legs)
- 

### MOBILE SYSTEM:

- 1 x Midas M32R
- 1 x Midas DL32
- 1 x 50 m. CAT5e
- 2 x Turbosound NuQ152-AN top
- 2 x Turbosound NuQ118B-AN sub
- 6 x Turbosound TFX122M-AN monitors





# LIGHTS

## LAMPS:

- 6 x Robe 150 wash (Stagelight)
  - 4 x Robe Parfect 100 (Frontlights)
  - 6 x Martin Mac250 Krypton (Profiles)
- 

## HAZER:

- Swefog K1
- 

## LIGHTNING DESK:

- Avolites Quartz
- 

## BACKDROP TRUSS:

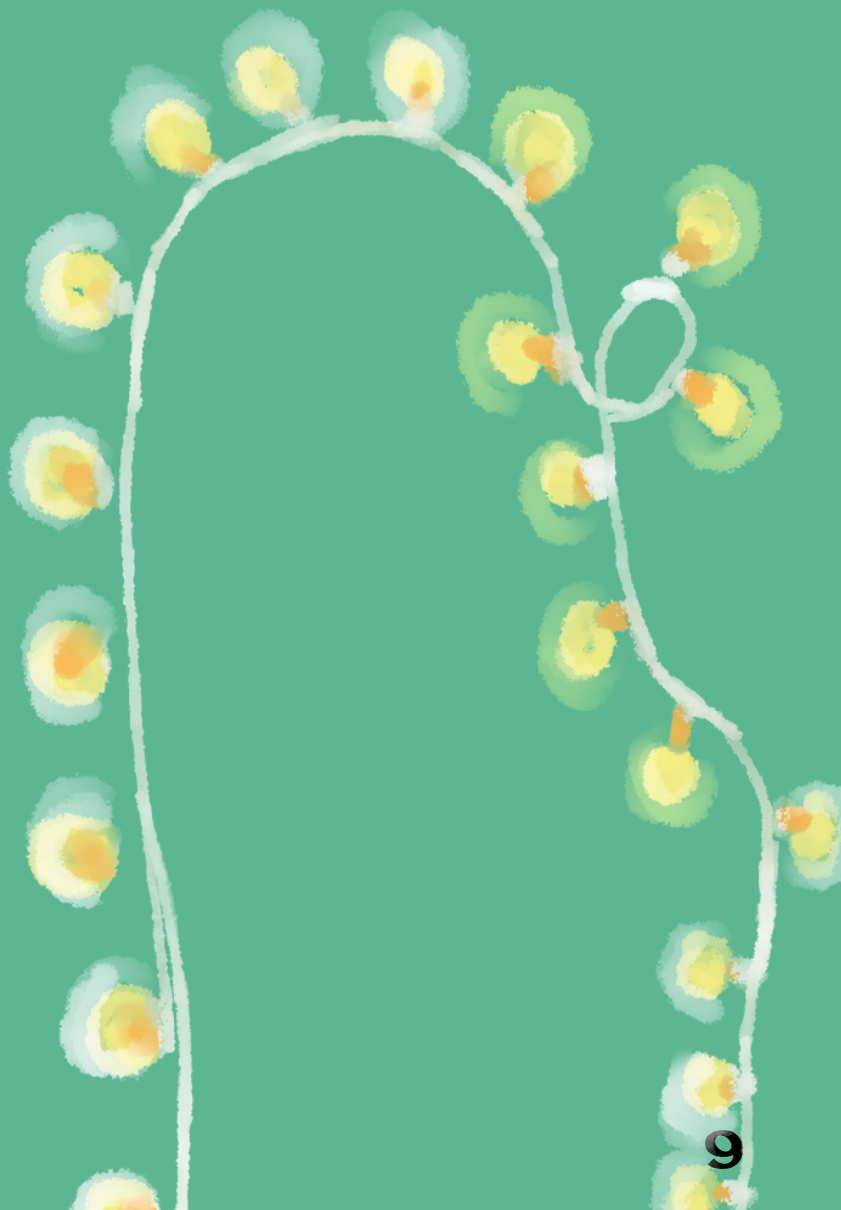
- 1 x Movable truss for backdrop  
(Contains Lamps)
- 

## STAGE:

- W x D x H x Clearance  
7,8 x 6 x 0,56 x 4 meters
- 

## VISUALS:

- 4 x overhead projectors for analog  
visuals & liquid light show  
(if wished, it is to be operated by  
our volunteers :-)



# BACKLINE

## DRUMS:

- Yamaha Tour Custom Maple
  - 22inch Kick
  - 10 inch Tom
  - 12 inch Tom
  - 16 inch tom
  - Yamaha Hardware 700 Series
  - Hi hat stand
  - Snare stand
  - 2 x Cymbal stands
  - Pedal FP8500
  - Yamaha drum chair
  - Zildjian 14+16+17+21 /A
  - Pearl 14x6,5 Maple sensiton snare
- 

## BASS:

- 1 x Tone hammer 750 bas amp
  - 1 x Ampeg SVT-410HLF
- 

## DJ EQUIPMENTS:

- 1 x Pioneer DJM900NXS2
- 2 x Pioneer CDJ2000NXS2

# POWER

Power Available on **stage left**.

- 1 x 128/3a
  - 1 x 64/3a
  - 1 x 32/3a
  - 2 x 16/3a
- 

## GUITAR:

- 1 x Vox AC30 C2 Combo
  - 1 x Fender Twin Reverb Combo
  - 2 x GTR stands
- 

## KEYS:

- 1 x Nordstage 3 76 key Hammer action
  - 1 x Sustain pedal
  - 1 x Piano bench
  - 1 x X stand
  - 1 x Keystand with two tier adapter for Synth
  - 1 x Yamaha grand piano
- 

## EXTRA:

- 2 x Sheetstands
  - 1 x Nebula Mars II Pro projector 500 ANSI lumen
- 



**turkis**

**SEE YA!**

